

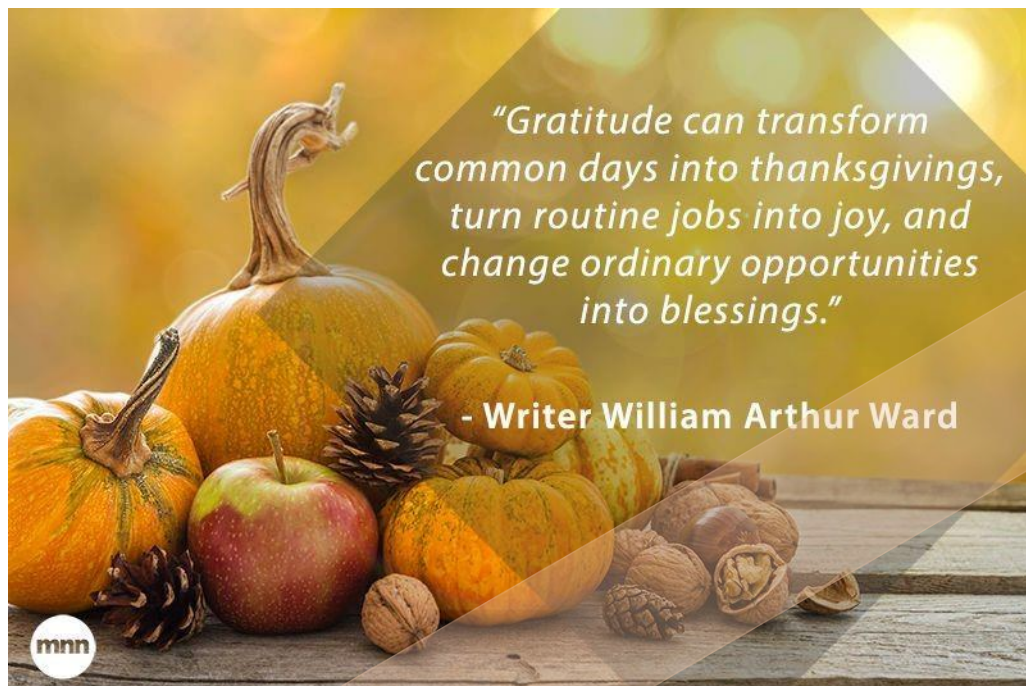
# Fairfield's C&I Update

November 2017  
Volume 5, Issue 3

## The Science of Happiness

As we enter into this Thanksgiving season, hopefully we will all have the opportunity to pause and reflect upon the people and things for which we are thankful. This time of year is one where we often put thankfulness, or gratitude, at the forefront of our minds. What is important for all of us to know is that gratitude is directly connected to happiness. How? Check out this video below and see for yourself.

<https://www.youtube.com/watch?v=oHv6vTKD6lg>



From all of us to all of you – Thank you for making FCSD a great place for kids!

*Reminder ... If you are looking for information to help you interpret your value added report, check out these links:*

- [Battelle for Kids Value-Added Information](#)
- [Value-Added Student Growth Measure](#)
- [Common Questions about Ohio's Value-Added Student Growth Measure](#)



### Office of Curriculum and Instruction

Rob Beidelman

Debi Freimuth

Laurie Gage

Laura Griffin

Angie Isgro

Dan Jeffers

Katie Pennel

Katie Pospisil

Debbie Rulon

Jennie Thompson

Lori Wegman

Lani Wildow

This corner of the Curriculum & Instruction monthly newsletter focuses on questions specific to our English Learners.



More information regarding program descriptions can be found on the FCSD website or via [ODE](#)

## ESL Q & A

**Question 1:** *Why (who) do we need to identify and assess as Limited English Proficient/ English Learner (LEP/EL) students?*

**Answer:** Fairfield City Schools adheres to the guidelines established under the Civil Rights Act of 1964 (Title VI) and Title III regulations for identifying, assessing, and serving LEP students.

**Question 2:** *What does extended time (accommodation) for English Learners mean?*

**Answer:** All English Learners are allowed to have extended time, but it may not exceed one school day. The suggested extended time should be two times the normal length of the test, e.g. 2 hour test = 4 hours for EL. Of course, this decision should be based on the individual student and should not be a “one size fits all” approach. A student could continue the assessment during

lunch, study hall, or after school. If this is not possible, then the teacher may grade only the items that the student completed. In this case, it might be helpful to indicate the most important test items for students to answer first.

Another way to offer extended time for a project or homework would be to “frontload” and put the extra time at the beginning of the assignment. For example, HW that is due on Tuesday can be given to the EL on Friday. Then they can have the weekend to start while turning the HW in with the rest of the class on Tuesday.

**Question 3:** *Who determines how much support an EL receives while in the school environment?*

**Answer:** In Ohio, school districts have the flexibility to decide on the educational approach that best meets the

needs of their LEP students and leads to the timely acquisition of the level of English proficiency the students need to succeed in school. FCSD’s services vary among the buildings, depending on their ESL population. Our ESL program includes pull-out ESL class, ESL teacher or tutor support (in or out of the classroom), and sheltered ELA classes. More information regarding program descriptions can be found on our website or at [ODE>Home>Topics>Other Resources>English Learners](#).

As always, if you have any questions regarding English Learners, the ESL staff in your building is a great resource. You can also contact the ESL Department (Laurie Gage and/or Angie Isgro) at the Fairfield Administration Building.

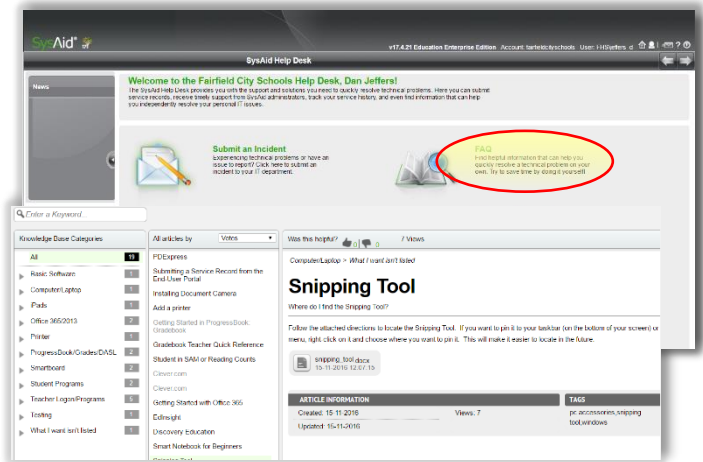
Thank you for all you do to help and encourage our students who are learning English!

# Tech Self-Help Resources

There are a great deal of resources available to help with many of your tech challenges. Here is a quick highlight.

## The Tech Help Desk

By hitting the F1 key on your keyboard, you will be taken to the Tech Help Desk. Not only can you share tech needs here, but you can also find answers for many issues. When clicking the FAQ link, you will be whisked away to a menu of articles. They are listed by topic in the left column and by title in the middle column. Choose an article, and the text will appear to the right. Sometimes there is a document attached for reference. Simply click on the document to open.



## SharePoint

The Office of Curriculum and Instruction SharePoint site also has a great deal of information regarding technology. You can access this information directly from the site by clicking the 'Technology' link in the left navigation bar. You can also click 'Technology Information' on your building SharePoint site. From here, you will find a list of folders for the applications we use in the district. Click on the appropriate folder, and you will find Smartsheets covering various topics/questions about the application.

Around the District...

